



National MBE Manufacturers Summit 2016

March 24, 2016

Georgia Tech Global Learning Center, Atlanta, Georgia

INNOVATION | PRODUCTIVITY | SUSTAINABILITY



PRODUCTIVITY

Corneal Viewing Chamber Lid and Base Engineering Change

Problem:

- Upon initial pressurized high altitude testing, it was found that the assembled lid and base were leaking. This is critical because the cornea along with tissue are submerged in a media to preserve the organ until the recipient is notified that an organ has become available



Process:

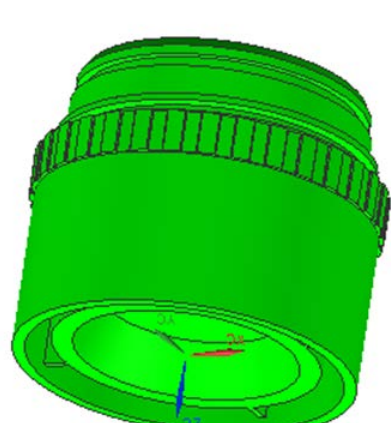
- A pass/fail bubble leak test where the chamber was pressurized to 7.5 pounds per square inch (PSI) was conducted in which passing consisted of 10 consecutive trials with the current sealing system must not leak. The original design did not meet these requirements.



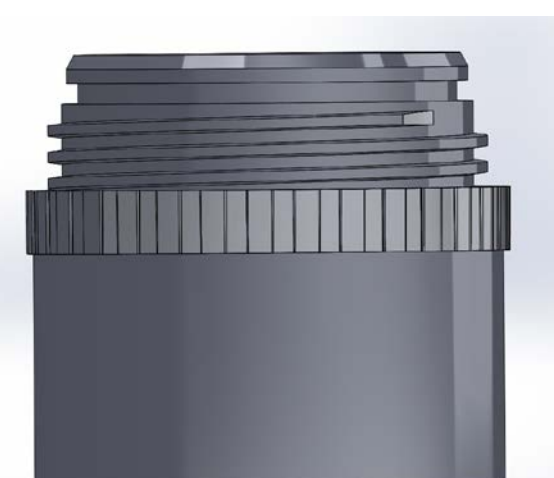
Solution:

- The leaking issue was resolved by implementing an Engineering Change (EC) adding a 360 degree thread to the top of the jar to increase the sealing surface when combined with O-Ring. The lid now rotates 360 degrees for a full turn instead of 180 degrees, or a half turn.

Before



After



Our Company:

- Through innovation in technology and operations, Core Technology Molding Corporation is utilizing the existing assets, businesses and resources to discover new solutions by fostering the creativity of our people and our customers.
- By combining our expertise in injection molding, marketing, engineering and manufacturing- we have the ability to offer lower pricing by removing costs from the manufacturing process. Core Technology Molding Corporation is a certified MBE (Minority Business Enterprise) by the Carolinas Virginia Minority Supplier Development Councils, Inc. www.carolinasmcdc.org which is an affiliate of the National Minority Supplier Development Council, Inc.

- 4300 Piedmont Parkway Greensboro, NC 27410
 - www.coretechnologycorp.com

